



Salamander Chytrid Disease

Other names: Chytridiomycosis, *Bsal*

- ◆ The Salamander Chytrid Disease, which is caused by the pathogen *Batrachochytrium salamandrivorans* (*Bsal*), has spread from Asia to Europe where it has killed large numbers of salamanders and newts.
- ◆ This disease now risks being spread to Canada, the US and Mexico where there are more native salamanders and newts than anywhere else in the world.

**Protect your pet salamanders and newts!
Protect wild amphibians!**

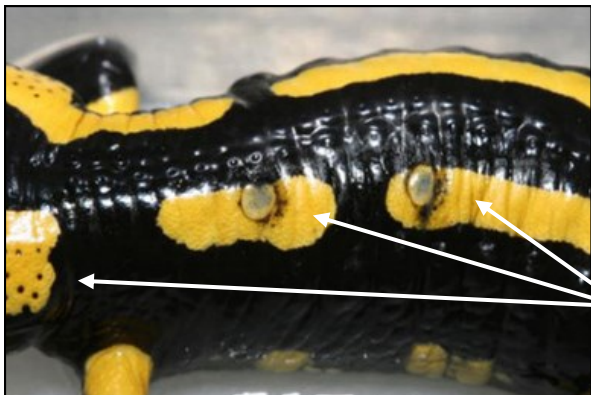
At Home

Safe Pet Purchases & Care

- ◆ Where do your pet salamanders or newts come from? Take appropriate precautions when purchasing amphibians and discuss *Bsal* with your pet shop staff.
- ◆ Neutralize cage wastewater before disposing of it: use bleach (1/4 to 1/2 cup per litre of water) and let stand for at least 10 minutes.

Observe & Report

- ◆ Check your pet amphibian for **skin abnormalities** (reddening, ulcers) or other signs of disease and contact your veterinarian when in doubt.
- ◆ Quarantine your pets showing signs of illness to prevent contamination.



In the Wild

Prevent introduction and movement of the disease

- ◆ Do not release salamanders, newts or any other animals into the wild.
- ◆ Do not touch or move wild amphibians.
- ◆ Wild salamanders should never be collected as pets.

Be aware in the outdoors

- ◆ Contact the **Canadian Wildlife Health Cooperative (CWHC) National Office [1(306) 966-5099]** if you observe a number of dead or sick wild salamanders or newts.
- ◆ Take close-up photographs of the amphibians and send them to the **CWHC (national@cwbc-rscf.ca)**.
- ◆ Click [here](#) for information on how to collect dead amphibians as scientific evidence.

Follow this simple disinfection protocol when visiting wetlands:

1. Keep soap and bleach away from water bodies to prevent damage to aquatic habitats.
2. Wash your equipment (boats, boots and field gear) with soap and rinse with water (preferably hot tap water, if available).
3. Use a 5% bleach solution to disinfect: use ½ cup of bleach for every 9½ cups of water.
4. Rinse out the bleach with clean water (tap or bottle). Do not rinse with water from the site (pond, lake, etc.)
5. Let your equipment dry completely if you are done for the day.

For more information

- ◆ **The Amphibian Survival Alliance and Amphibian Specialist Group:** www.amphibians.org
- ◆ **The Origins of the Salamander Eater :** www.amphibians.org/news/watching-extinction-happen-origins-of-the-salamander-eater
- ◆ **The Chytrid Disease website:** www.salamanderfungus.org/about-bsal
- ◆ **The Chytrid Disease Facebook Page:** www.facebook.com/salamanderfungus
- ◆ **The Canadian Wildlife Health Cooperative website:** www.cwhc-rscf.ca



Top border photos courtesy of Crowley (2016). From left: Northern Two-lined Salamander, Spotted Salamander, Red-spotted Newt and Blue-spotted Salamander. Jefferson Salamander photo (above) courtesy of Gillingwater (2016). Fire Salamander with ulcers photo by: Mark Blooi (2016)